

Albemarle, North Carolina

CITY MANAGER

THE POSITION IN BRIEF

Albemarle, NC (pop. 16,404) seeks an experienced municipal government professional to serve as its next City Manager. Albemarle has a council-manager government structure under a mayor and seven-member council. The city manager's position is very stable, with the community only having had four city managers since 1962. The current manager is retiring after nine years as manager and 28 with the city.

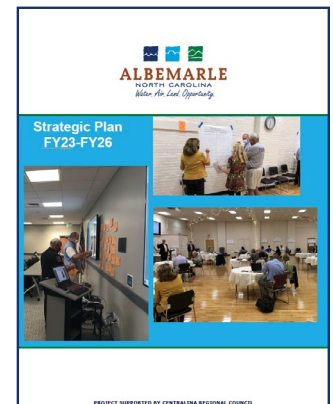
THE COMMUNITY

As the county seat Albemarle is the largest municipality in Stanly County and is located in the beautiful Uwharrie Lakes region near two of the state's largest urban areas Charlotte and the Piedmont Triad area. The city has a thriving business community and is known for friendly neighborhoods and small-town charm and offers wonderful outdoor opportunities including camping, hiking, boating, fishing, and swimming.

The population of the city has been very stable for years but is expected to see significant growth in the next 10 years. Albemarle is also seeing a revitalization of its downtown with new businesses and Pfeiffer University opening its Center for Health Sciences as a satellite campus. The continued downtown development is one of the many exciting opportunities facing the city.

The city has developed a strategic plan to help guide the expected growth of the community. One of the challenges will be providing the infrastructure needed for the new growth.

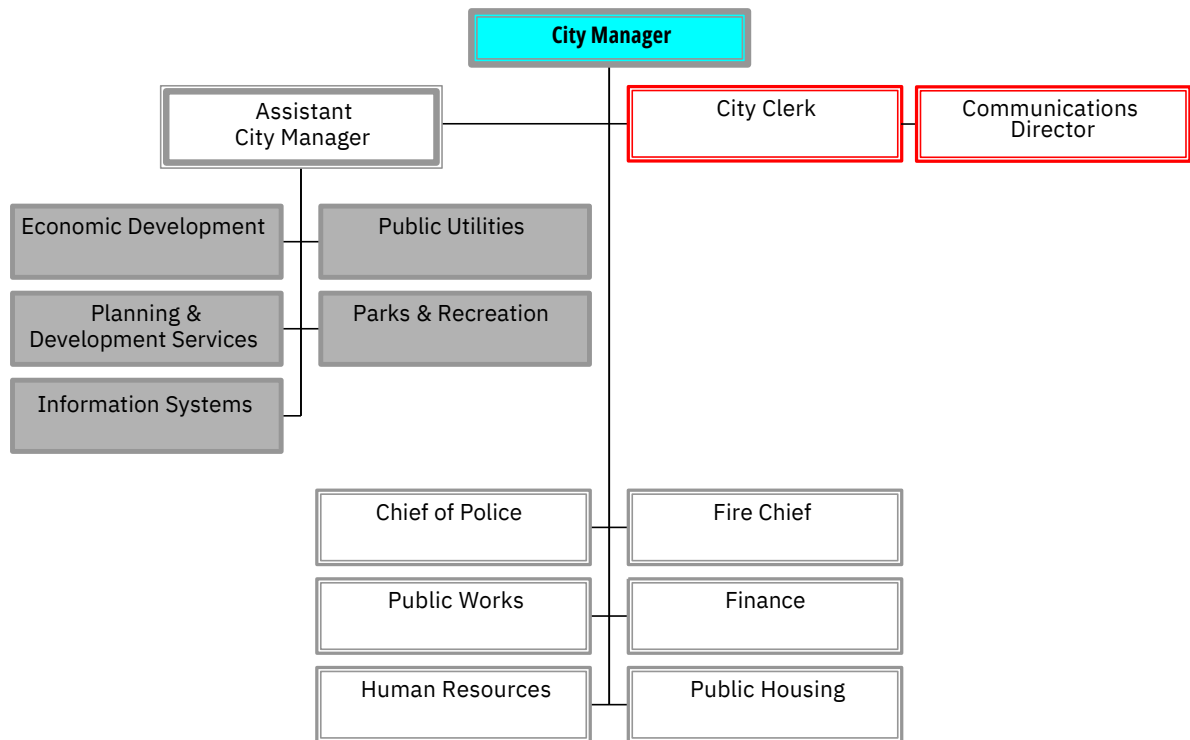
[View Strategic Plan](#)



THE CITY ORGANIZATION

Albemarle is a full-service city with a FY2024 total budget of \$81 million and 330 full-time equivalent (FTE) positions across all funds. The City's budget includes general fund, water/sewer fund, and electrical fund. The city also operates a public housing department and landfill that provides service to the entire county.

City of Albemarle Administration



THE IDEAL CANDIDATE

- The City Council seeks a strong leader capable of addressing difficult issues associated with the position.
- The City Manager will be expected to be a visible leader in the community capable of building relationships with local government partners and community stakeholders.
- The City Council seeks candidates with an engaged, active management approach that enables them to remain versed on major priorities and issues while empowering their managers to lead.
- Successful candidates will have a track record of cultivating productive teams with positive morale. They will have a strong grasp of municipal finance and budget.



POSITION REQUIREMENTS

A master's degree in public administration, business administration, urban planning, or related field and seven to ten years of progressively responsible municipal government experience, including senior management leadership. ICMA-CM preferred. The manager will be required to reside in the city of Albemarle after a reasonable period of time.



COMPENSATION AND BENEFITS

The salary range for this position is \$135,045 to \$209,319 DOQ. The city also offers a generous benefits package that includes participation in NC Local Government Retirement System; group health insurance, paid vacation and sick days. The city also provides 50% of the cost for gym membership and longevity pay after five years of service.



HOW TO APPLY

Position is open until filled. Apply at www.GovHRjobs.com to the attention of W. Lane Bailey, Senior Vice President, 630 Dundee Road, #225, Northbrook, IL 60062. Tel: (847) 380-3240.

The logo for GovHR USA and GovTEMPS USA is displayed above the logo for MGT EXECUTIVE RECRUITMENT. The MGT logo features three green diamonds of varying sizes to the left of the letters 'MGT'. Below this, the text 'EXECUTIVE RECRUITMENT' is written in white capital letters on a dark blue background.