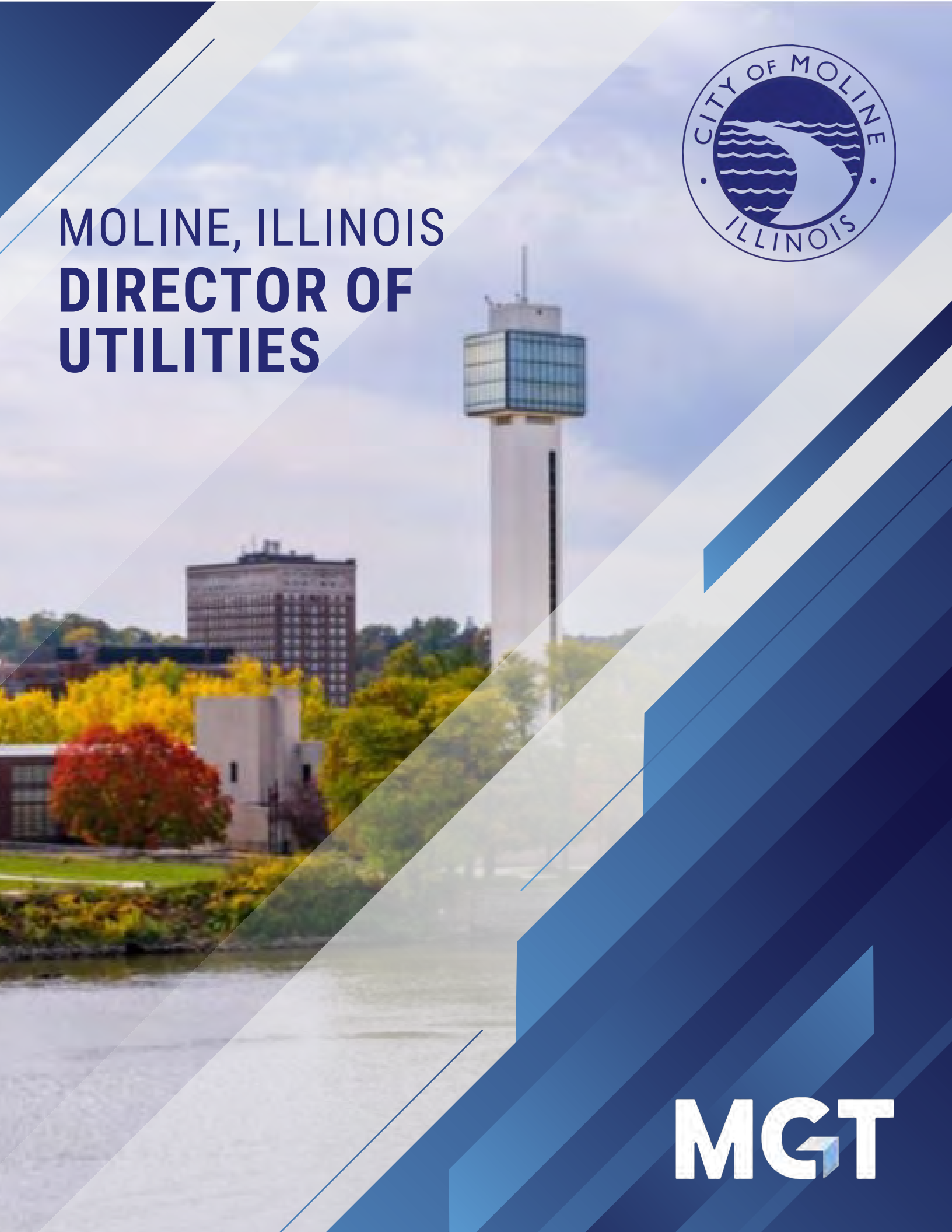




MOLINE, ILLINOIS DIRECTOR OF UTILITIES



MGT

MOLINE, ILLINOIS

DIRECTOR OF UTILITIES



COMMUNITY HISTORY AND BACKGROUND

The City of Moline (pop. 42,985) is located between the banks of the Mississippi and Rock Rivers in western Illinois and borders the State of Iowa. Moline is located 165 miles west of Chicago and is a historic community with a vibrant downtown, excellent schools, welcoming neighborhoods and a growing commercial base.

The City of Moline is located in the heart of the Midwest and is the ninth most populated city in Illinois outside of the Chicago Metropolitan Area. With the city motto: “Moline – A great place to live”, Moline has a high quality of life standard for its residents as well as a variety of recreational opportunities for them and its visitors which can be seen by the investments the community has made. With easy access to Interstates 74, 80 and 88, rail service and waterways, the city is an environment that is welcoming to businesses and residents.

Incorporated in 1872, Moline’s founding fathers were primarily industrialists from New England whose endeavors attracted many Swedish, Belgian, and German immigrants to the area. Moline continued to see population increases well after World War II with additional waves of immigrants from France, Eastern Europe, and Mexico. The diverse heritage still found within Moline offers a broad range of cultural experiences within the community. As Moline continues to mature, there is a high level of collaboration among local businesses and local agencies to continue to bring planned development and businesses to Moline.

As one of the Quad Cities (actually now five cities), along with East Moline and Rock Island in Illinois, and Davenport and Bettendorf in Iowa, they make up a metropolitan area with more than 400,000 people. The Quad Cities area is home to the corporate headquarters of Deere & Company (Moline), Arconic, Kraft Heinz, Sterlite Corporation, and Nestle Purina. Moline is also home to the operational headquarters of KONE in the United States, the Quad Cities International Airport, the Vibrant Arena at The MARK, Black Hawk College, Western Illinois University-Quad Cities, and SouthPark Mall.



Moline's Downtown Historic District retains a feeling of a historic downtown rich with architecture and vibrant businesses. The overall condition of the district's commercial buildings is good, with many continuing to display a high level of architectural integrity. One of the stimulators for the renaissance of the downtown came in the late 1980s when a group of dedicated business and civic leaders created a public/private partnership that was tasked to create jobs, expand Moline's tax base, and return the vibrancy to Moline's downtown. The outcome of this effort was the creation of Renew Moline, Inc. This group of dedicated businesses and individuals is committed to working in partnership with the City of Moline to implement the "Moline Centre Plan." Since 1989, this partnership has facilitated over \$400 million of public and private investments that significantly eliminated blight and substantially revitalized Moline Centre, fast becoming a national model as a place to live, work, and play.

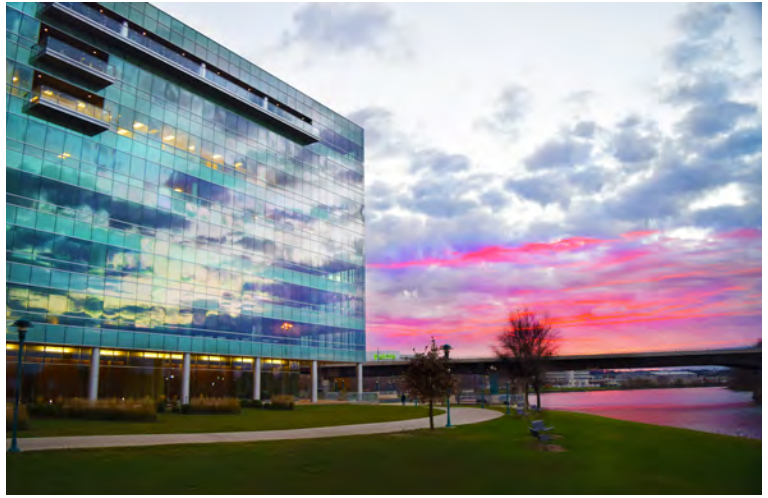
The downtown area also offers a variety of venues that have various festivals, events and family gatherings. Many nights live music is held at the Historic Block Courtyard and Bass Street Courtyard especially during the summer months. Additionally, a variety of businesses in the downtown offer entertainment such as Mercado on Fifth or the Analog Arcade and Pizza. In addition to local businesses, there is also the Vibrant Arena at The MARK, a 12,000-seat venue that hosts a variety of concerts, sporting events and various performances such as Disney on Ice and Cirque du Soliel.

There are approximately 18,500 households in Moline. A wide variety of housing sizes, styles and price ranges are available throughout the community from older structures to new construction home sites, especially as the city looks to encourage residential building on the south end of the community.

The city encompasses more than 16 square miles, of which there are more than two dozen parks and preserves. Specifically, the Moline Parks and Recreation Department operates 28 parks comprised of more than 700 acres. This includes the Riverside Aquatics Center, the regionally renowned Green Valley Sports Complex, Ben Butterworth Memorial Parkway, Sylvan Island Nature Area, two municipal cemeteries, over 17 miles of trails, and neighborhood parks offering active and passive-use facilities, including activity fields, ball diamonds, pavilions, and many other recreational venues.

BUSINESS AND ECONOMY

The City of Moline continues to experience residential and commercial development throughout the community. Much of the community's new development is occurring in the form of infill development, redevelopment, and adaptive reuse projects. Successful development projects provide favorable economic impacts on the Moline community. These benefits include generating a higher economic multiplier effect, capitalizing on existing infrastructure, and adding value to existing structures or development sites.



There are a number of projects and developments that have either been recently completed or will soon be under way that indicate a positive economic forecast throughout Moline. Riverfront Master Plan: The new I-74 bridge crossing and corridor project represents the single largest public works development for the Quad Cities community and offers a significant opportunity for Moline in terms of continuing high impact riverfront development that benefits Moline and the region as a whole.

The City of Moline has created the I-74 Realignment Zone in cooperation with the State of Illinois and private partnerships. The city has worked with Renew Moline to secure the vacated I-74 right-of-way. This land, which stretches from the Mississippi Riverfront to the base of the river-facing bluff, will be highly desirable for future development and the completed I-74 Mississippi River Bridge will be a catalyst for development.

EDUCATIONAL OPPORTUNITITES

Community residents have a choice of both public and private elementary and high schools. Moline School District #40 serves the communities of Moline and Coal Valley with 10 elementary schools, two middle schools, and Moline High School. There are also three private elementary/secondary schools in Moline.

Black Hawk College is located in Moline and offers more than 140 career, certificate, and transfer programs. It serves all or part of nine counties in northwestern Illinois and operates under the Illinois Community College District system. Western Illinois University-Quad Cities has a campus on the riverfront that has continued to grow and expand over the past several years including an 85,000 sq. ft. academic building primarily designed for an engineering college. There is also access to private colleges in the Quad Cities area.

Moline, and the greater Quad Cities area, provides many opportunities to enjoy world-class art, culture and sporting events. As promoted by the Quad Cities Visitors and Convention Center, visitor and residents alike enjoy a variety of activities featuring the Mississippi River, riverboat cruises, live music, festivals, historic sites, casinos, outdoor recreation, biking trails, arts, culture, golf, wineries, microbreweries, and shopping.

CITY GOVERNMENT IN MOLINE

The City Council is Moline’s legislative body and is comprised of the Mayor, one member from each of the City’s seven wards, and one that represents the City on an at-large basis. The Mayor is elected separately for a four-year term of office. The policies of the City are set by the City Council and the Mayor.

The City Administrator is the chief administrative officer and has the responsibility of administering the day-to-day operations of the City and executing the policy decisions of the City Council. The City Administrator appoints the Director of Utilities, as well as other department directors, with the advice and consent of the City Council, except the parks and recreation and library directors who are appointed by their respective boards.

Moline is a full-service City including Police, Fire/EMS, Public Works, Community and Economic Development, Parks and Recreation, Library and administrative support services. For Fiscal Year 2024, the city’s total budget was approximately \$144.8 million, of which capital projects compose \$20.4 million and enterprise funds \$23.8 million. When internal service funds, transfers out and ARPA funds are subtracted, the net expenditure budget was \$115.9 million and has 415 budgeted positions for all departments.

MOLINE AT A GLANCE

Population: **42,985**

Households: **18,573**

Median Age: **38.8**

Median Household Income: **\$68,553**

Taxable EAV for 2024 Taxes: **\$919,774,449**



MOLINE’S LARGEST EMPLOYERS		
EMPLOYER	INDUSTRY	EMPLOYEES (APPROX.)
UnityPoint Health Industry	Medical	2,700
Deere & Company	Manufacturing	2,000
Moline-Coal Valley School District	Education	1,060
Black Hawk College	Education	600
Vibrant Arena at the Mark	Entertainment	500
Walmart Supercenter	Retail-Grocery	450
City of Moline	Municipal Government	415
Hy Vee	Retail - Grocery	300
Kone Elevator	Manufacturing	200
Menards	Retail - Home Improvement	200

UTILITIES DEPARTMENT

Moline’s utilities department is charged with the responsibility for water and sewer systems and actively works to operate and maintain treatment and conveyance infrastructure, which have been developed, expanded and enhanced since the earliest days of the community. In its simplest form, the goal is to ensure water always flows out of the tap, and then disappears down the drain in a safe, reliable and economical way. The vitality of the community is dependent



on many functional systems which operate to ensure the safety, economy, and health of Moline. Safe drinking water, water pollution control (sewers), and water for fire suppression are foundational elements of all modern communities.

The Department has three divisions: Water, Sewer (Water Pollution Control) and Stormwater. The citizens of Moline have made substantial investments in the assets that comprise the water, sewer and storm systems. The award-winning department is a team of over 60 allocated employees with broad ranges of knowledge, skills and abilities. Together, they hold various professional certifications or credentials and have in excess of 450 combined years of experience. Team members range from scientists, technical, clerical, construction, to engineers. The combined FY 24 budget for the entire department is just over \$24.5 million.

The Mississippi River is the primary jewel of the city and the ability to use the river for water and discharge water to the river is vital to the department. The department is committed to protecting it and works to ensure pollution from the community does not enter it without proper treatment. The importance of the river to the economy, health and safety is critical and pollution prevention provides the area rivers an opportunity to be enjoyed for recreation and viable as aquatic habitat.



CANDIDATE QUALIFICATION CRITERIA

The City of Moline is seeking a Director of Utilities with a proven track record of excellence, able to effectively adapt to the resources and culture of the community and the organization, while performing as an effective and innovative leader.

EDUCATION AND EXPERIENCE

A bachelor's degree in science, engineering technology or related field from an accredited college or university and experience in the principles of wastewater collection systems, municipal and industrial wastewater treatment processes along with water treatment and distribution systems is required. Additionally, ten years of progressively responsible experience in water and/or wastewater utilities, of which five years shall have been in management or supervision, is desired.

This position will direct, administer and coordinate the activities of the Utilities Department in support of policies, goals and objectives established by the City Administrator and the City Council. The position requires someone with a professional record of open communication with elected officials, community groups and residents, with a dedication to transparency in local government.

The successful candidates must also possess:

- An Illinois Environmental Protection Agency's Class "A" Certificate of Competency as a potable water operator or the ability to obtain one within 6 months of employment.
- An Illinois Environmental Protection Agency's Class 1 Certificate of Competency as a sewage treatment operator or the ability to obtain one within 6 months of employment.
- A Certification by the Illinois Department of Public Health to conduct bacteriological analysis or ability to obtain one.



CHALLENGES AND OPPORTUNITIES

The successful candidate will follow a director that retired with almost 34 years with the City, 26 of which was in the Utilities Department and 3.5 years as its Director. They will be expected to step in to this role and provide the leadership to identify, filter and address organizational concerns that may be impacting the Department. The next director will be charged with advancing the organization to new levels of success.



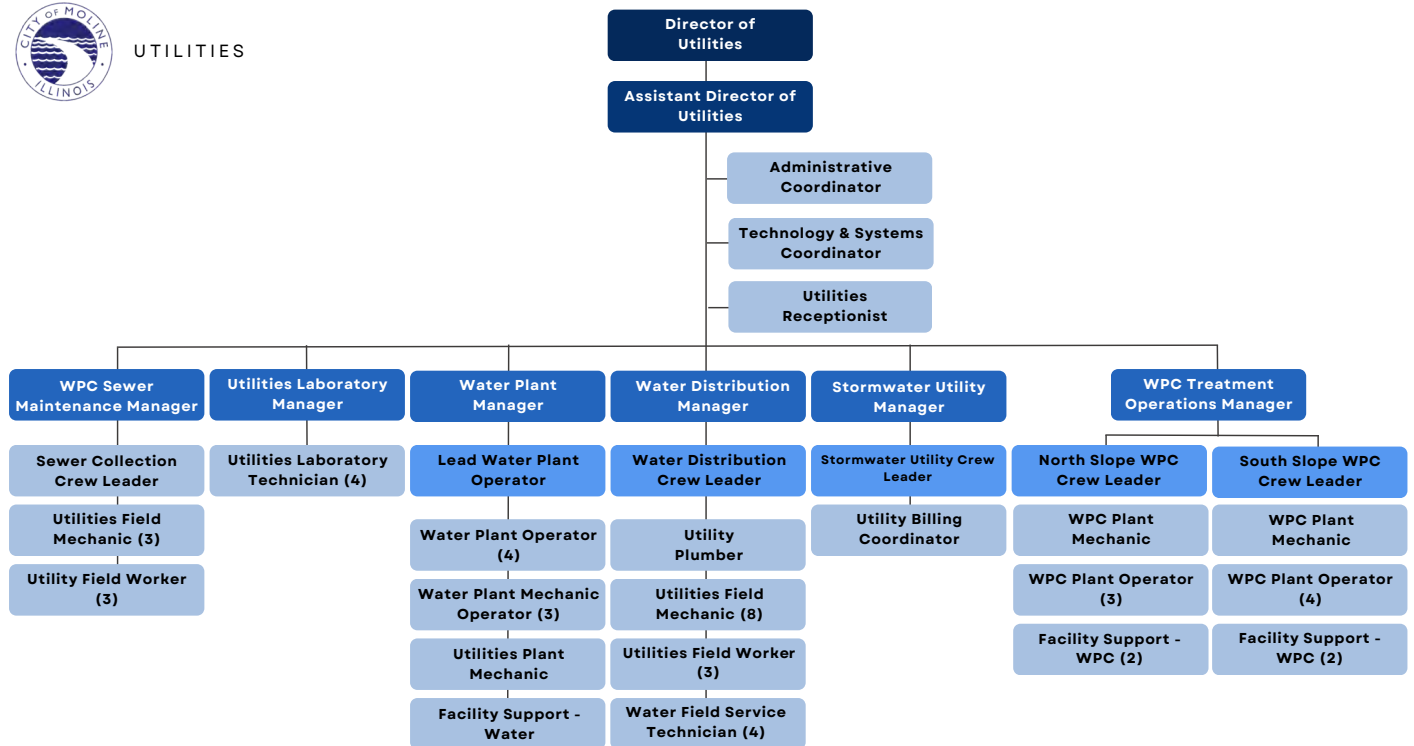
The director will come on-board when a substantial upgrade project is underway at the South Slope Water Pollution Control facility. This \$60M upgrade of an existing facility is a substantial investment and the director will be expected to get up to speed on the facility and how this upgrade will enhance the system. Additionally, the director will need to continue to manage the replacement of lead service lines per state and federal regulations.

The next director will formalize programs to train and develop all personnel in the Department and identify critical elements for developing and preparing future leaders of the Department.

The department has a solid operational staff and the city desires a leader to guide, plan and maintain existing relationships with neighboring communities and to build new relationships throughout the region and to meet the expectation of being an industry leader in this region and the state of Illinois.



UTILITIES



SUCCESSFUL CANDIDATES SHALL ALSO HAVE:

Extensive experience in treatment plant operations and maintenance, distribution and collection systems operations and maintenance; or equivalent combination of training and experience which provides the required knowledge, skills and abilities to perform the duties of the director.

Experience in the development and implementation of a department plan; developing, articulating and carrying out annual goals and objectives and have the ability to prepare responsible budgets and have strong fiscal management.

Knowledge of employee and labor relations and possess a reputation for dealing openly and fairly with both individual employees and employee groups. Be able to effectively carry out initiatives in the interest of the department and the City of Moline.

A proven record and strong understanding of fiscal constraints in a municipal environment; as part of a city leadership team with common and shared needs, be able to develop, justify and present a department budget.

Experience in identifying the needs of a responsible capital improvement program and the ability to manage the implementation and construction of those capital improvements.

Personal and professional integrity inspiring the confidence of elected and appointed officials as well as the general public and conduct all personal and professional interactions fairly, honestly and ethically, avoiding any appearances of a conflict of interest.

An ability to provide insights and policy recommendations to the City Administrator, Mayor and Council members, and have the maturity, self-confidence, and strength of professional convictions to support their work; be able to effectively and diplomatically present professional views and options, and carry out decisions in a timely, professional, and impartial manner.

Flexibility and an open, friendly personality and management style and be one who can establish trust quickly with others; have excellent interpersonal skills and the ability to work with differing personalities. Maintain a calm demeanor during times of stress, providing thoughtful guidance to employees, other department heads and elected officials.

Strong analytical skills for developing reports and well-reasoned recommendations based on a thorough analysis of the relevant data; and be able to present these recommendations in a logical, understandable manner.

Have a record of keeping up-to-speed on modern/innovative technology, programs and procedures, understanding how technology can be used to enhance transparency in government, increase efficiencies and provide considerate customer service for residents.

Excellent communication skills and the ability to convey complex technical information in a simple, understandable way, as well as effectively manage communication during emergencies or utilities outages, providing clear, accurate information to the public and media.

HOW TO APPLY:

The salary range for the position is \$114,938 to \$166,660 DOQ with excellent benefit package. Residency is not required, but highly preferred. Interested candidates should apply online at [GovHRJobs.com](https://www.govhrjobs.com) with a cover letter, resume, and contact information for at least five professional references by April 11, 2025. For further information, contact Executive Consultant Sarah McKee at 847-380-3240 ext. 120.

The City of Moline is committed to compliance with the American Disabilities Act and is an Equal Opportunity Employer. Diversity and inclusion are critical to their success. They seek to recruit the most talented people from a diverse candidate pool and strongly encourage all qualified candidates to apply.



MGT