



ASSISTANT COUNTY MANAGER CHATHAM COUNTY, GEORGIA



MGT

ASSISTANT COUNTY MANAGER CHATHAM COUNTY, GEORGIA

THE POSITION IN BRIEF

Chatham County, GA is seeking a highly skilled local government leader to serve as its next Assistant County Manager (ACM). The successful candidate will be a key member of the Executive Leadership Team and will take the lead on major infrastructure projects as well as manage related departments. The ideal candidate possesses a balance of senior local government management experience and a strong background in engineering, construction, infrastructure development, and/or project management. They will also demonstrate a track record of successful project planning and execution. The Assistant County Manager is appointed by and reports to the County Manager.

THE COUNTY

With a population of 296,000, Chatham is the most populous Georgia county outside of metro Atlanta. It is part of the Savannah Metropolitan Statistical Area (MSA), which includes Bryan and Effingham counties and has a total population of approximately 405,000. Chatham County is situated on the Atlantic Coast and is bounded by the Savannah and Ogeechee Rivers and the southern border of South Carolina. The Savannah-Hilton Head International Airport (SAA), quick access to Interstates 95 and 16, and two Amtrak passenger lines make the county not only an attractive destination but an accessible one as well, welcoming leisure and business travelers year round. Current and new manufacturing/industrial facilities are fueling economic growth in the region, and multiple higher education institutions call Chatham County home, including Savannah State University, Savannah College of Art & Design (SCAD), and a satellite campus of Georgia Southern University.

The county seat is Savannah, a vibrant city known for its architecture, history, and lively dining and entertainment scene. Living in Chatham County means being in close proximity to beaches, rivers, state parks, and nature reserves like Tybee Island, Skidaway Island State Park, and Savannah National Wildlife Refuge. Residents and visitors enjoy a wide range of outdoor pursuits, including boating, fishing, kayaking, hiking, and bird watching, along with year round festivals and cultural events.

DEMOGRAPHICS & RELATED DATA

(Source: [U.S. Census Bureau](#))

Median Age: **35.9** years

Median Household Income: **\$61,064**

Median Home Value: **\$214,900**

Race/Ethnicity

52.5% White alone;

41.3% Black/African American alone; **3.2%**

Asian alone;

7.0% Hispanic/Latino

Educational Attainment

90.6% High school diploma

35.5% Bachelor's degree

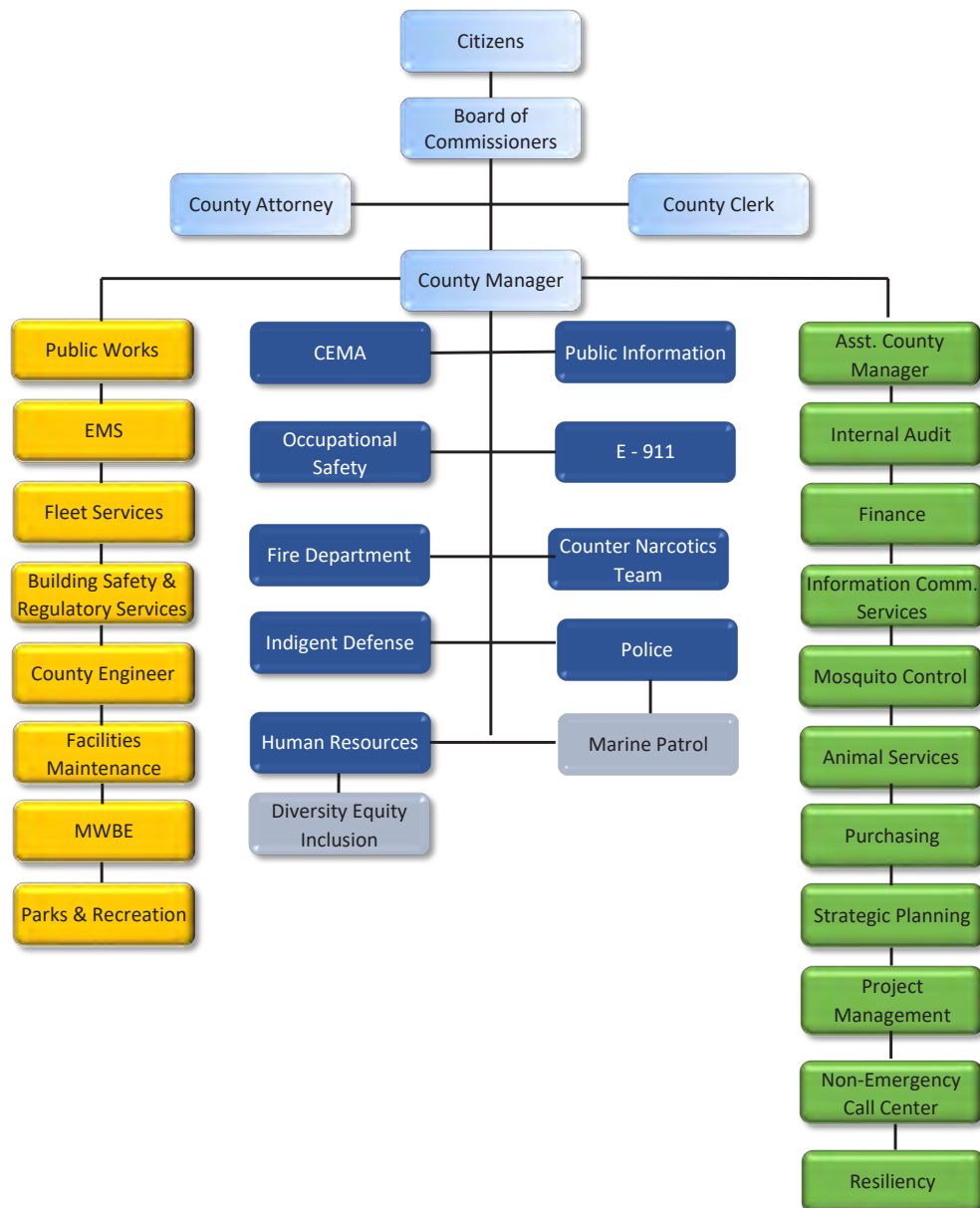


THE COUNTY ORGANIZATION

Chatham County operates under the Commission-Manager form of government with eight Commissioners elected from single-member districts and a Chairman elected at-large. The County Manager is appointed by the Board of Commissioners to provide professional guidance and support to the Board, implement Board policies, and provide administrative oversight of county government operations. The Board of Commissioners also allocates funding for the courts, Sheriff, Tax Commissioner, and other independently elected or appointed functions.

Chatham County has a FY2025 total budget of \$758 million. Approximately \$300 million of the budget is restricted for capital project funds, most of which have been authorized under special purpose local option sales tax (SPLOST) referendums from 1985 forward. The County employs over 2,200 full-time equivalent (FTE) positions across 35+ departments.

CHATHAM COUNTY ORGANIZATION CHART



Along with its own vision and goals, Chatham County supports the Chatham Community Blueprint, a community-wide [strategic plan](#) developed with intensive citizen engagement in collaboration with cities and other community partners in the county. This unique cooperative approach maximizes limited resources and enables collaborative planning and problem solving to the benefit of all Chatham County stakeholders.

VISION

Make Chatham County, Georgia the best place to live, work, and play!

MISSION

To protect and serve the public and provide essential services to improve the quality of life.

CORE VALUES

Honesty through Integrity

Safety with Justice

Stewardship promoting Transparency

Efficiency with Effectiveness

Pride increasing Respect

Teamwork producing Achievement

GOALS

Promote Public Health, Safety, & Welfare

Practice Exemplary Stewardship

Deliver Quality Customer Service

Provide a Superior Work Environment

THE ASSISTANT COUNTY MANAGER (ACM) POSITION

As one of two ACMs, this position will provide executive-level customer service, problem resolution, and operational leadership to the directors of Public Works, Engineering, Parks & Recreation, Facilities Maintenance, Fleet, and Building Safety & Regulatory Services. In addition to stewarding infrastructure and capital project activities, the ACM will coordinate with the County Manager to keep him informed of ongoing priorities. To be successful in this position, candidates should be able to manage multiple projects at once, collaborate well with other counties, municipalities, and outside agencies, function as a strategic thinker, and be able to respect and mesh with the culture of Chatham County government.

NOTE: This is an onsite position and the incumbent is required to shelter in place with County staff during major weather events and emergencies.

Other responsibilities and expectations for the position include:

- Managing operations and programs with department heads and key management staff that fall under his/her supervision
- Monitoring and evaluating the progress of departments to achieve the goals and objectives of the administration
- Understanding of local government finance and procurement, and experience with developing and monitoring departmental, project, and program budgets
- Evaluating and analyzing interdepartmental processes for risk-mitigation, safety, quality control, and improvement
- Responding to inquiries from the public regarding issues unresolved at the departmental level
- Collaborating with the County Manager and staff to develop the County's strategic plan, annual operating budget, and capital budgets, as directed by the Board of Commissioners
- Working with both elected and appointed County officials to solve internal organizational problems within assigned departments and divisions and across departmental lines





QUALIFICATIONS

Master's Degree in Public Administration, Business Administration, Engineering, or a closely related field is strongly preferred; and ten (10) years of progressively responsible public management experience, of which five (5) years must include senior management/senior administrative experience, preferably in the public sector at the local level of any government, especially county government; or any combination of experience and training which provides the equivalent scope of knowledge, skills, and abilities necessary to perform the work.

COMPENSATION & BENEFITS

The minimum starting salary is \$175,000, commensurate with qualifications and experience. Moving expenses may be offered, as necessary. Chatham County offers a competitive benefits package that includes health, vision, and dental coverage; access to a no-cost Employee Health Center; and life and disability insurance paid by the County. The County currently offers a defined benefit pension plan with a five-year vesting period.

HOW TO APPLY

Apply at www.GovHRjobs.com with a cover letter, resume, and contact information for five (5) professional references by June 4, 2025. Confidential inquiries may be directed to Dele Lowman, MGT Senior Consultant, at (847) 380-3240 x141.

Chatham County is an Equal Opportunity/Affirmative Action Employer and a Drug-Free Workplace.

MGT