

# TOWN OF BELOIT, WISCONSIN FIRE CHIEF



**MGT**



# TOWN OF BELOIT, WISCONSIN FIRE CHIEF

**Fire Chief, Town of Beloit, WI (pop. 7,926).** A historic community established in 1842, the Town of Beloit provides a blend of urban and rural lifestyles. Located on the Wisconsin-Illinois border the town is strategically located and conveniently accessible to much of the upper Midwest. It is adjacent to the City of Beloit, with a greater-area population of more than 110,000. Interstates 43 and 90 intersect in the City of Beloit, placing the area within an easy drive to the metropolitan areas in Illinois of Chicago and Rockford, as well as the cities of Milwaukee and Madison in Wisconsin. The Town is a vibrant blend of old and new and maintains its charm and high quality of life while balancing growth and progress. The area has been recognized for its livability and family-friendliness. The Town's land area covers more than 27 square miles.

[The Town](#) has a workforce of 60 full-time employees providing an array of municipal services. They include police, fire/EMS, public works, sewer, , and administrative services to name a few. The Town Administrator oversees a general operating budget of nearly \$11 million. The Town is seeking experienced, strategic leaders for the position of Fire Chief.







## COMMUNITY HISTORY AND BACKGROUND

The Town of Beloit is located near the junction of the Rock River and Turtle Creek, adjacent to the Illinois border in Rock County. Its history can be traced back almost 200 years. The origin of the town's name is disputed, but it seems that the name Beloit came from a French word meaning "handsome ground." The spelling was fashioned after Detroit, a city the settlers saw as a symbol of trade and growth. This alternative was sought after a short-lived time in which the area was known as New Albany.

Today, the Town strives to maintain its charm and high quality of life while balancing growth and progress. The Town surrounds the [City of Beloit](#) to the north and west. It is also neighboring towns including the Town of Turtle, the Town of Newark, and the Town of Rock. Arterial roadways into the Town include U.S. Highway 51, and State Highways 213 and 81. Interstates 43 and 90 intersect in Beloit, and the area is within an easy drive to Chicago, Rockford, Milwaukee, Janesville, and Madison. The greater Beloit area's population exceeds more than 110,000. Scenic routes are found throughout the Town that highlight some of the most picturesque natural, cultural, and historic features of the area.

The greater Beloit area has over 1,000 acres of scenic parks which provide ample areas for active and passive recreation. Beloit's beautiful natural and small-town charm are punctuated by surrounding rivers, 80 acres of Town-maintained public parks and other recreational opportunities.

The area is also the home of numerous industrial firms, several corporate headquarters, and many retail establishments including the worldwide headquarters of the Hendricks Companies including ABC Supply, Hendricks holdings, and Hendricks Commercial Properties. Other major employers in the Greater Beloit area include the Beloit Health System (1556 employees), School District of Beloit (1194), Birds Eye (650), Taylor Company (712), Frito-Lay (685), and Kerry Americas (654).

Healthcare in the greater Beloit, WI area is anchored by a mix of hospital systems, community health centers, and specialty providers that serve both urban and rural populations. They include [Beloit Memorial Hospital](#), [Community Health Systems \(CHS\)](#), Beloit Clinic and satellite clinics in Roscoe (IL), South Beloit (IL) and other areas. [Mercy Health](#) is scheduled to open a new emergency department at Mercyhealth Beloit. Mercy health is a health system with hospitals and clinics throughout southern Wisconsin and northern Illinois. These organizations are deeply involved in outreach, education, and preventive care. Each have received awards for patient satisfaction and community partnership.

## EDUCATION

The area is served by two school districts. The Town is primarily served by the [School District of Beloit Turner](#), a small to mid-size district in a suburban/rural setting, with three main campuses. Powers Elementary serves early grades, (Early Childhood, 4K through 1st grade), Garden Prairie Intermediate School serves grades 2 through 5, and the middle school and high school have a shared main campus. The [School District of Beloit](#) has six elementary, two middle and one high school, with alternative programming and charter schools. The [Lincoln Academy](#), a K4-12 public charter school, is also located in the City of Beloit.

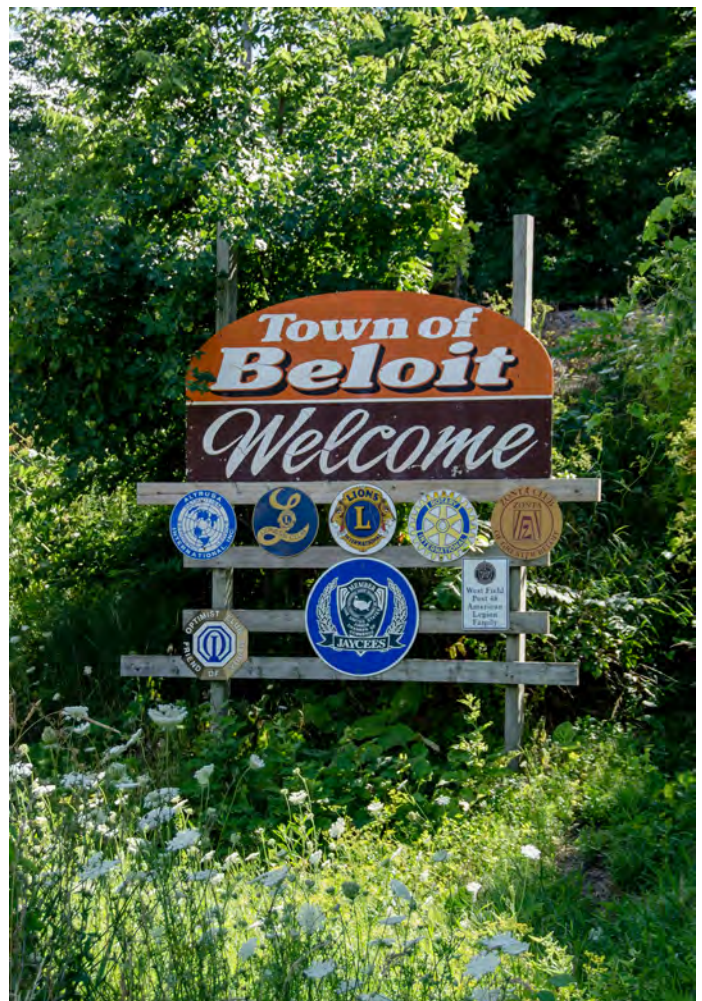
One of the premiere institutions in the area is [Beloit College](#), located just a block from downtown Beloit. Beloit College is a private liberal arts college chartered in 1846. Today, Beloit College, with an enrollment of 1,300 students from 49 states and 40 countries, enjoys a national reputation for excellence. The College serves as a cultural center for the community, offering a wide variety of theatre productions, lectures, concerts, and art exhibitions. Beloit College is one of the oldest institutions of higher learning in the state of Wisconsin and provides innovative educational programs for community residents of all ages as well as undergraduate degrees in 50 fields of study.

The [University of Wisconsin – Rock County](#), with 1,220 students, is located ten miles from downtown Beloit. [Blackhawk Technical College](#) also has a campus in Beloit as well as a main campus located between Beloit and Janesville. The College provides technical training to Rock County area students as well as current workers and designs customized training for area employers.

## GENERAL BELOIT (TOWN AND CITY) ACTIVITIES

An active [YMCA](#) facility as well as a Boys and Girls Club offer a variety of recreational and educational opportunities. The community has over 70 churches representing 26 denominations. Numerous attractions and venues which draw visitors and enhance the quality of life for residents in the community include the Welty Environmental Center, Beloit College Poetry Garden, The Angel Museum, The Restored Beckman Mill, Logan Museum of Anthropology, the Beloit Sky Carp Minor League Baseball team, the Beloit Historical Societies Lincoln Center Museum and the Hanchett-Bartlett Homestead.

The Town offers beautiful public parks with public boat access to the Rock River. The Town of Beloit is also home to the [Beloit Club](#) (country club), which provides an award-winning 18-hole golf course and family-friendly pool areas, and the 100-year-old [Beloit Rifle Club](#).





## GOVERNMENT IN THE TOWN OF BELOIT

Towns are "general purpose" local governments, which means they provide basic services used daily by all residents. The major duties and powers of all towns are spelled out in Article IV, Section 23 of the Wisconsin Constitution, Ch. 60 of the Wisconsin Statutes (which pertains specifically to town governments) and Ch. 66 of the Wisconsin Statutes (which applies to towns, villages, and cities).

The Town of Beloit is one of the largest Towns in the State of Wisconsin. The Town provides an unusual level of services for a town that is much more commonly seen in cities and villages.

By Wisconsin Statute, the day-to-day administrative issues of each Town may be handled by an elected Town Board, consisting of three or five members. Town Boards are elected for two-year terms in spring elections of odd-numbered years.

For over two decades in Beloit, a Town Administrator has provided day-to-day oversight of municipal operations. The Town Board consists of five Supervisors elected every two years on an at-large basis.

The Town Chair is the chief executive officer of the Town and presides over meetings of the Town Board.

## TOWN OF BELOIT AT A GLANCE

Population: **7,926**

Households: **3,534**

Equalized Assessed Value:  
**\$826.6** million

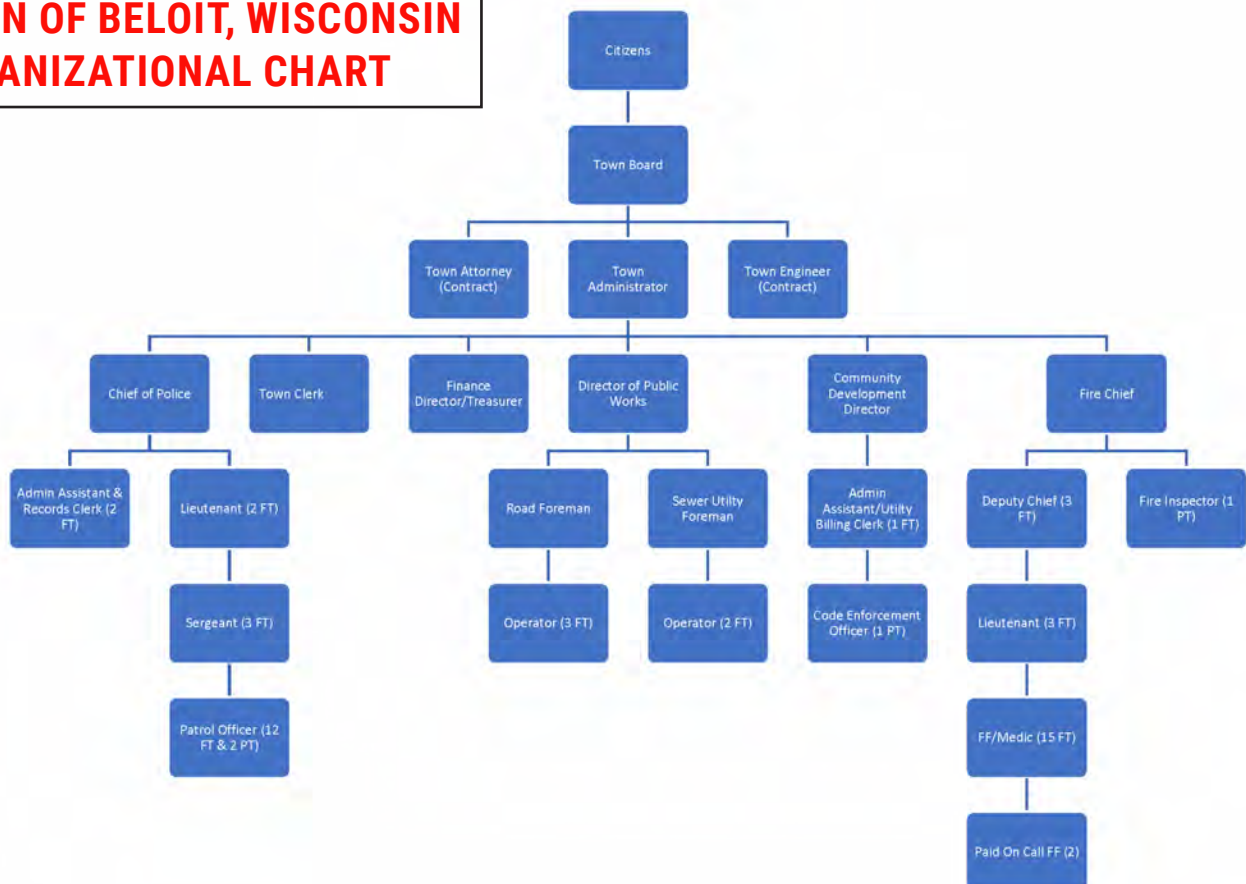
Land Area: **27** square miles

Median Home Value: **\$263,472**

Median Household Income:  
**\$82,959**

(Source Data:  
[HomeTownLocator.com](http://HomeTownLocator.com))

## TOWN OF BELOIT, WISCONSIN ORGANIZATIONAL CHART



## THE FIRE DEPARTMENT

The Town of Beloit Fire Chief serves as the senior leader of the Town of Beloit Fire Department, overseeing operations, personnel, and strategic planning for fire suppression, emergency medical services, and public safety initiatives. The department is an innovative, all hazards agency providing fire prevention, code enforcement, public education, ice/surface water rescue, vehicle extrication, EMS, and fire suppression services to a community encompassing 27 square miles. The Town also provides fire/EMS services to the Town of Rock (pop. 2,987) and the Town of Newark (pop. 1,539).

- The department is a combination model, employing both full-time career staff and paid-on-call personnel. These different types of personnel from different walks of life come together to provide the best possible service to the Town and surrounding communities.
- As of late 2025, the department had 21 full-time staff, with a proposed budget for 27 full-time positions in 2026 and they are actively hiring to support the launch of Fire Station #2, completed in December 2024.
- The staff consists of the Fire Chief, Deputy Fire Chief of Prevention, Deputy Fire Chief of Administration, (3) shift Lieutenants, (2) MPO/EMTs, (10) Firefighter/Paramedics, and (11) MPO/Paramedics (Motor Pump Operators). IAFF Local 583 represents both Town of Beloit and City of Beloit shift personnel. The Town of Beloit labor agreement with IAFF Local 583 applies to Town of Beloit shift personnel only.
- Currently the Town has operational agreements with the City of Beloit and the City of South Beloit (IL) for the fire chief (both communities) and shift personnel (South Beloit) as a shared position. The Beloit contract will end shortly, and the South Beloit contract is scheduled to end in October of 2026, or earlier.
- The department puts a high level of emphasis on professional standards through training, public education, and specialized rescue services beyond their response to fire and EMS emergencies. All staff conduct company inspections, and specialized inspections are completed by specific trained personnel.
- In 2024 the department responded to 1500 EMS calls for assistance and 335 fire related responses.
- Current budget is \$3,769,291. The department improved their FSRS rating with ISO from a Class 4 to Class 3 in 2023.







## THE NEXT FIRE CHIEF PROFILE:

- **Leadership:** Be dedicated to becoming an effective servant leader and building collaborative and positive relationships with employees, colleagues, and outside organizations. Have strong and confident communication skills, excellent relationship-building abilities, and an accessible leadership style, be one who can establish trust quickly with others. Have thorough knowledge of the principles of personnel management including recruiting, training, promoting, disciplining, and terminating employees within a fire service context.
- **Versatility:** Play an important role in coordinating, facilitating, and managing projects that require involvement across multiple service areas, with a strong desire to work in a collegial, team-oriented environment.
- **Innovation:** Bring fresh ideas to the organization and offer unique perspectives and experiences.
- **Experience:** Specifically, have experience in the areas of fire operations, emergency management, EMS support, budgeting, and community risk reduction, personnel management and working in a collectively bargained environment.
- **Energy:** Provide enthusiasm and bring focused energy to all projects, and a passion for service to the community. Be highly motivated, and able to develop and articulate a long-term plan for the fire department with the charisma to lead the team to an even higher level of excellence.
- **Motivation:** A visionary, goal-oriented leader with a proven ability to gain cooperation and communicate in a clear direction.







## CANDIDATE QUALIFICATIONS & EXPECTED EXPERIENCE:

- Bachelor's Degree in Fire Science, Public Administration, or a closely related field.
- Increasingly responsible experience with a Fire Department of similar or larger in size to the Town of Beloit; including a minimum of eight (8) years upper-level administrative responsibilities within a Fire Department.
- Thorough background in modern EMS standards and operations. Current or former EMT/Paramedic preferred.
- Successful completion of Wisconsin Fire Officer I or equivalent as a minimum requirement. EFO or CFO designation desirable.

This is a full-time exempt position with a salary range of \$120,000 +/- depending on experience and qualifications, and a comprehensive benefit package including medical, dental, and WRS retirement plan. Residency will be discussed under the provisions of Wisconsin Statute §66.0502.

Candidates should apply by December 8, 2025 @ 1700 hours CST with resume, cover letter and contact information for five work-related, or professional references to [govhrjobs.com](https://govhrjobs.com) (electronic applications only). Questions may be addressed to the attention of T.E. Sashko, MGT, 790 Frontage Road Suite 213 Northfield, IL 60093, or (847)380-3240x123. The Town of Beloit, WI is an Equal Opportunity Employer.

# MGT