

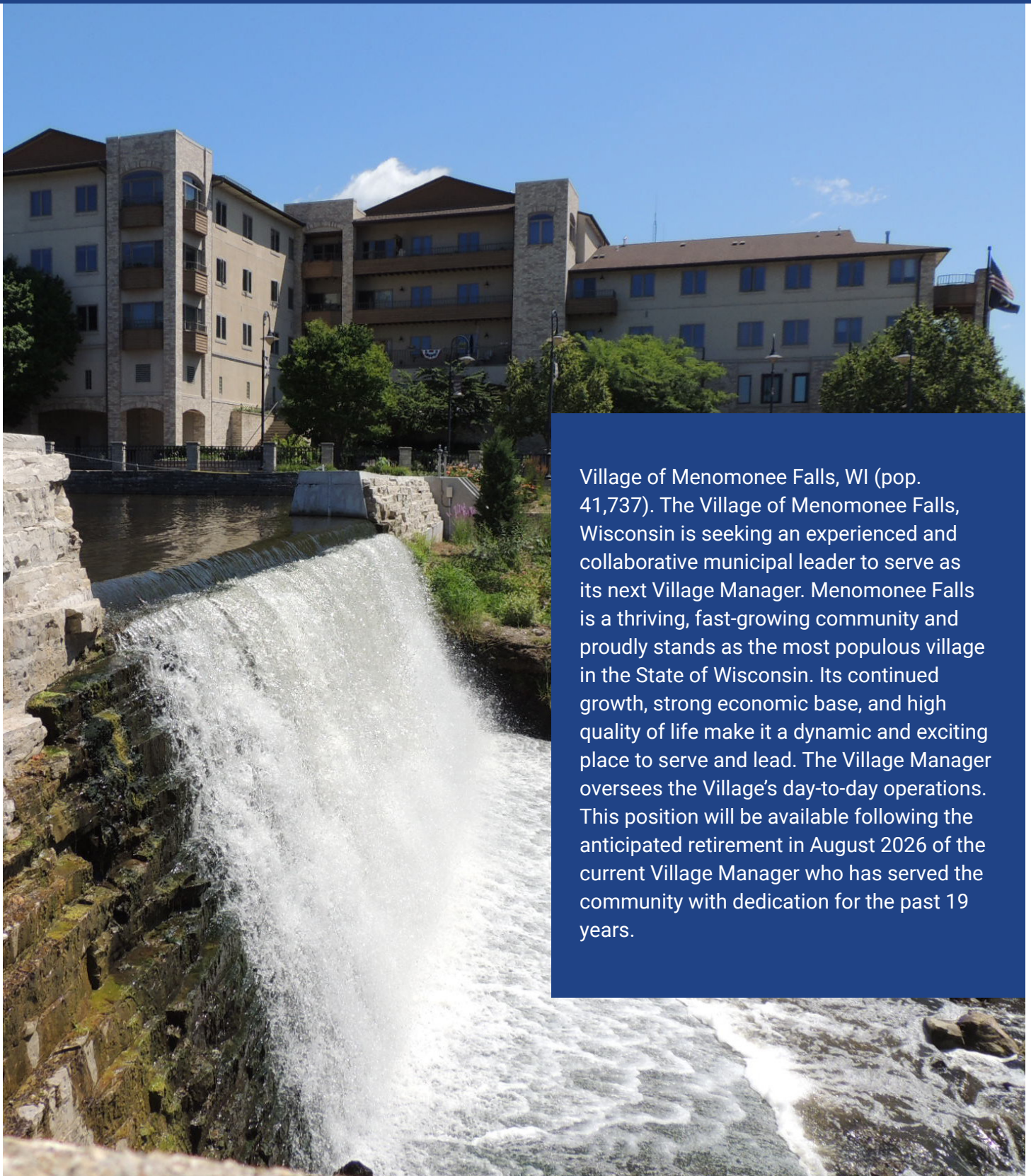


MENOMONEE FALLS, WISCONSIN  
**VILLAGE MANAGER**

---

**MGT**

# MENOMONEE FALLS, WISCONSIN VILLAGE MANAGER



Village of Menomonee Falls, WI (pop. 41,737). The Village of Menomonee Falls, Wisconsin is seeking an experienced and collaborative municipal leader to serve as its next Village Manager. Menomonee Falls is a thriving, fast-growing community and proudly stands as the most populous village in the State of Wisconsin. Its continued growth, strong economic base, and high quality of life make it a dynamic and exciting place to serve and lead. The Village Manager oversees the Village's day-to-day operations. This position will be available following the anticipated retirement in August 2026 of the current Village Manager who has served the community with dedication for the past 19 years.

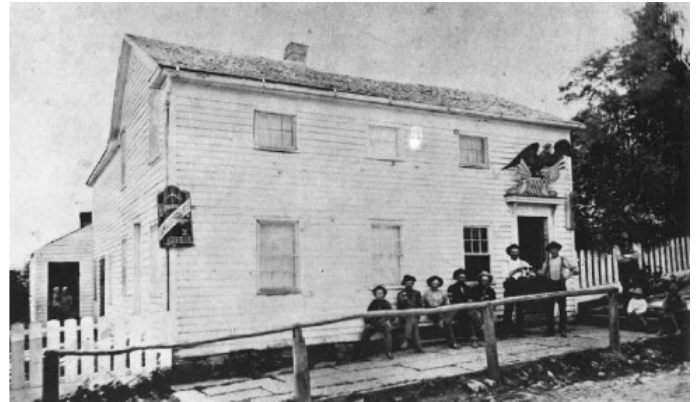
## COMMUNITY HISTORY & QUALITY OF LIFE

In the early 19th century, the area that is now recognized as the Village of Menomonee Falls was inhabited by native groups including people of Menomonee origin. European American settlement began in the 1840s with the establishment of the Town of Menomonee and the construction of mills along the Menomonee River and the first post office, school, churches, and homes. By the late 19th century, continued growth led to the Village's incorporation in 1892.

A defining moment in the community's history occurred in 1958, when a series of six annexations over just 91 days expanded the Village from approximately 2 to 32 square miles and increased its population from 4,500 to 12,000. Rapid population growth continued in the 1960s with the Village adding nearly 2,000 single family lots and over 13,400 new residents. By the end of the 20th century, a variety of major businesses had established corporate campuses in Menomonee Falls including Kohl's Corporation and Harley-Davidson. In recent decades, the Village has experienced steady population growth (averaging around one percent per year) and continued business expansion.

Today, Menomonee Falls is a thriving and well-balanced community known for its high quality of life and strong sense of Village identity. The [downtown business district](#) serves as the historic and cultural heart of the community. Festivals, outdoor concerts, seasonal markets, parades, sporting events, and performances by local fine arts and theatrical arts groups punctuate the Village's calendar and support a keen sense of community in Menomonee Falls.

As a thoughtfully planned community in northeastern Waukesha County, the Village's high quality of life is rooted in its flourishing local economy, wide variety of housing choices, safe neighborhoods, beautiful natural environment, high performing school districts, rich history, and effective local services. The Village offers small-town charm while providing outstanding amenities and convenient access to the Milwaukee region.



Two exceptional School Districts serve the community. [Menomonee Falls High School](#) holds a Silver Ranking from US News and World Report and has a graduation rate of 96.4% with 98% of students having post graduate plans. [Hamilton School District](#) providing education for K – 12, received the 2025 overall ranking of 13th out of 367 schools in the state and the 5-Star “Significantly Exceeds Expectations” from the Wisconsin School Report Card. Private schools include St. Mary’s Catholic School, Calvary Baptist School, Grace Lutheran School, Bethlehem Lutheran School and Zion Lutheran School, Aquinas Academy, and Chesterton Academy.

There are 114 colleges within 100 miles of Menomonee Falls, including the [University of Wisconsin – Milwaukee](#), [Marquette University](#), [Concordia University Wisconsin](#) and [Mount Mary University](#) which are all located within 15 miles.

The Village borders Milwaukee to the northwest and features:

- 16 Village parks (370 acres) and public open space areas encompassing 2,500+ acres.
- Bugline recreational trail (16-miles), Menomonee River Parkway Trail (3 miles), and 31 total miles of paved trails.
- Numerous baseball, softball, soccer, football, picnic, volleyball, tennis, ice skating areas.
- 400-acre Menomonee Park offering camping, hiking, cross-country skiing, archery, fishing, and a sandy beach for swimming.
- 18-hole [Wanaki Golf Course \(public\)](#) and the 18-hole North Hills Country Club (private).
- A full-service public library with a collection of well over 137,000 items.
- Nearby [Kettle Moraine State Forest](#) covering 17,000 acres, and dozens of other lakes located within 20 miles for boating, fishing, camping, hiking, picnicking and more.
- A comprehensive full health care and in-patient hospital, [Froedtert Menomonee Falls Hospital](#).

## MENOMONEE FALLS AT-A-GLANCE\*

Population: 41,737

Land Area: 32.91 square miles

County: Waukesha

Median Household Income: \$100,238

Households: 16,387

Median Home Value: \$431,130\*\*

Racial Demographic: 83.6% White; 3.6% African American/Black; 5.6% Asian; 4.8% Hispanic or Latino; 0.1% American Indian & Alaska Native

*\*Source: U.S. Census Bureau*

*\*\*Source: Zillow Home Values Index (April, 2026)*



## VILLAGE ORGANIZATION

The Village employs a full-time professional Village Manager along with well-qualified department heads to professionally manage the Village's affairs and public services. Menomonee Falls has a history of administrative stability, with three Village Managers having served the Village since 1970. The Village employs approximately 207 Full-Time, 64 Part-Time and 15 Seasonal employees. The Village's organization is lean, and staff possess a high-output work ethic.

The Village operates with an FY 2026 budget of approximately \$70 million and follows a calendar-year fiscal cycle. The Village maintains strong financial stewardship reflected in its Aa2 bond rating from Moody's. The Village has a history of a disciplined, fiscally conservative approach to budgeting and long-term financial planning. The Village continues to make strategic investments in infrastructure and public safety through its capital improvement program.

The Village of Menomonee Falls operates under a Council-Manager form of government. The Village Manager is appointed, and serves at the pleasure of the Village President and six-member Board of Trustees who are elected to three-year terms. The Village Manager serves as chief administrative officer and has full administrative responsibilities for the day-to-day operation of the village government, excluding those parts of the fire and police departments which are subject to the jurisdiction of the board of police and fire commissioners.



## THE VILLAGE MANAGER'S OFFICE

The Village Manager works closely with the Village President and Board of Trustees, Village Department Directors, and other community stakeholders to ensure the professional administration of the Village. The Village Manager provides direct guidance to the Assistant Village Manager/Director of Public Works, the Village Clerk, the Chiefs of Police and Fire, the Directors of Finance, Human Resources, Information Technology, Planning and Development, and Economic Development and Tourism. The Village's management team is a cohesive, energetic group. With a framework of a collegial work environment, the new Village Manager can expect this professional and seasoned assembly of management leaders to be a steady resource.

The Village Manager has a variety of responsibilities, as granted by the board and within the provisions of the budget. The Village Manager has the authority to create and eliminate administrative offices and positions based on their review and judgment of the village's needs. The Village Manager may appoint, suspend, or discharge all village employees including directors of departments and subordinate village officials except those under the authority of the Police and Fire Commission. The Village Manager is responsible for the preparation of the annual budget and has the ability to negotiate and execute contracts up to and including \$75,000 when the funds are in the approved budget.



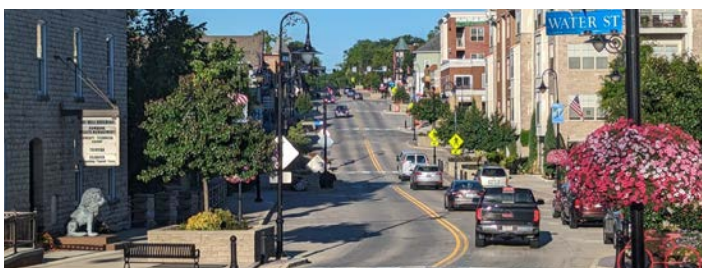
## AREAS OF FOCUS

- **Encouraging Economic Development and Revitalization.** Menomonee Falls continues to experience steady growth across residential, commercial, and industrial sectors, creating both opportunity and complexity. The Village benefits from a strong economic base, an active historic downtown, and ongoing development along key corridors, while also facing redevelopment opportunities in more established areas.

The next Village Manager will play a central role in guiding balanced growth and reinvestment efforts. This includes working collaboratively with elected officials, staff, developers, and residents to navigate development pressures and align projects with the Village's long-term vision and fiscal philosophy. A successful candidate will understand how to leverage development to strengthen the tax base, enhance quality of life, and support sustainable growth.

- **Maintaining Financial Stability and Exploring Revenue Opportunities.** Like all Wisconsin municipalities, the Village's finances are tested by various parameters guiding the generation of new sources of revenues, as well as State of Wisconsin tax levy limits. The Village has worked diligently to maintain its financial health. Menomonee Falls has a strong track record of fiscal discipline and long-term financial planning, supported by a conservative approach to budgeting.

The next Village Manager will build on this foundation by working closely with the Board of Trustees and staff to maintain financial stability, evaluate service levels, and identify strategic revenue opportunities. This includes balancing growth-related revenues with infrastructure and service demands, ensuring that decisions are fiscally responsible and aligned with community expectations.





• **Community Engagement and Communication.**

Menomonee Falls benefits from strong relationships with a wide range of community and business stakeholders, including the Chamber of Commerce, school districts, and local organizations. Menomonee Falls has a robust retail presence with a vibrant downtown and many active business owners in the community. With that as a foundation, the next Village Manager is expected to cultivate and build relationships with these stakeholders.

The next Village Manager will be expected to build upon these relationships through a visible, approachable, and responsive leadership style. This includes effectively communicating with residents, proactively engaging stakeholders on key initiatives, and fostering regional partnerships with neighboring communities. The ability to build trust, navigate differing perspectives, and maintain open lines of communication will be critical to success.

Additionally, the new Village Manager has an opportunity to form cooperative connections with Menomonee Falls neighboring jurisdictions through continued efforts at innovation, professional development, and cost-containment.

• **Infrastructure Investment and Capital Planning.**

The Village is making significant investments in its public infrastructure to support continued growth and maintain high-quality service delivery. In July 2025, the Village Board approved planning and financing to expand and upgrade the Menomonee Falls Police Department at Village Hall while converting the site of a now-closed fire station to a Public Safety Training Facility for the

police and fire departments. The total cost of the project is estimated at \$35.8 million, with \$20.9M for Police/Village Hall renovations and \$14.9M for the training center. These projects reflect the Village’s commitment to long-term planning and operational excellence. The next Village Manager will play a key role in overseeing these initiatives, ensuring projects are delivered on time and within budget, and aligning capital investments with the Village’s strategic priorities.

It is essential that the next Village Manager be experienced in leading municipal capital improvement programs, along with a strong grasp of fiscal management and resource allocation. The next Village Manager will serve as a connector, facilitating communication between staff, departments, and external partners.

• **Visionary Leadership and Organizational Effectiveness.**

The Village is seeking a strategic and forward-thinking leader who can build upon Menomonee Falls’ strong foundation while preparing the organization for the future. With a seasoned and long-tenured leadership team, the next Village Manager will be expected to empower staff and promote collaboration across departments.

This role requires the ability to evaluate organizational structure, modernize systems and processes, and implement thoughtful improvements—particularly in areas such as technology, service delivery, internal coordination, and performance management. Operating within a lean environment, the Village Manager must prioritize effectively, think long-term, and guide the organization with both vision and discipline.

## QUALIFICATIONS

- Requires a bachelor's degree in public administration, public policy, urban and regional planning, finance, or a related field. A master's degree is preferred.
- Minimum of seven (7) years of professional work experience in municipal or county government, three (3) of which are in progressively responsible management roles.
- Valid State of Wisconsin driver's license or ability to obtain one upon hire.



## THE IDEAL CANDIDATE

The ideal candidate will bring a balance of vision and practicality—someone who can navigate complex operational demands while positioning the organization for continued success in a growing and fiscally conservative environment. They will bring a forward-looking mindset to both day-to-day operations and long-term planning, advocating for innovation, continuous improvement, and cross-departmental coordination.

The ideal candidate is an experienced, collaborative, and forward-thinking leader who:

- Demonstrates exceptional written and oral communication skills, with an ability to collaborate successfully with elected officials, staff, and other community stakeholders.
- Is a strategic and visionary thinker who can leverage data and performance metrics to inform decision-making and drive organizational effectiveness.
- Brings experience balancing development and redevelopment, service demands, and long-term initiatives in a growing community.
- Possesses strong financial and administrative acumen, including expertise in budgeting, capital planning, program evaluation, and organizational leadership.
- Is skilled in contract negotiations and managing complex agreements, including intergovernmental partnerships.
- Embraces innovation and technology to enhance service delivery and improve operational efficiency.



The Village is seeking someone who brings both steadiness and vision, able to navigate complex operational challenges while shaping a modern and responsive organization that reflects the evolving needs of residents and businesses in Menomonee Falls. The ideal candidate will approach challenges with creativity and promote accountability. Fostering open communication and inspiring a shared commitment to quality and service will be essential to long-term success.

## COMPENSATION & BENEFITS

The full salary range is \$175,000 - \$225,000 +/- DOQ, plus an excellent benefits package. Residency in the Village is not required by State law. Village employees participate in the Wisconsin Retirement System, which is administered by the State of Wisconsin.

## HOW TO APPLY

Apply online at [www.GovHRjobs.com](http://www.GovHRjobs.com) with a resume and cover letter by the application deadline of May 31, 2026. Confidential inquiries may be directed to Ashley Eccles, MGT senior consultant at 847-380-3240 x134.

The Village of Menomonee Falls is an Equal Opportunity Employer



# MGT