

NEBRASKA

DEPT. OF HEALTH AND HUMAN SERVICES

REGIONAL HOSPITAL ADMINISTRATOR



GovHR USA
GovTEMPS USA

**EXECUTIVE
RECRUITMENT**

REGIONAL HOSPITAL ADMINISTRATOR

STATE OF NEBRASKA – DEPARTMENT OF HEALTH AND HUMAN SERVICES – LINCOLN, NEBRASKA

GovHRUSA is very pleased to announce an exciting opportunity to serve as a Regional Hospital Administrator for the [Nebraska Department of Health and Human Services \(DHHS\)](#). This is a newly created executive leadership position for those candidates with a passion for public service and a dedication to serving individuals in the state's behavioral health and developmental disabilities care. This is an opportunity to join an exceptional leadership team assembled by a progressive and dedicated CEO. The position oversees the Behavioral Health Regional Centers located in Lincoln and Norfolk and the Developmental Disabilities Center located in Beatrice.

The DHHS “Helps People Live Better Lives” every day through the work of its five divisions including their Division of Behavioral Health and their Division of Developmental Disabilities. The Department is guided by [values and core competencies](#) that emphasize a commitment to excellence, integrity, positive attitude and a dedication to the success of others.



THE REGION

Lincoln (pop. 290,000) is regional hub for commerce, recreation, education, and culture. The city encompasses 100 square miles in the southeast portion of the state and boasts a vibrant downtown including the [Pinnacle Bank Arena](#) located in the [Historic Haymarket District](#).

Interstate 80 connects Lincoln and Omaha and passes through the city as a gateway to the West.

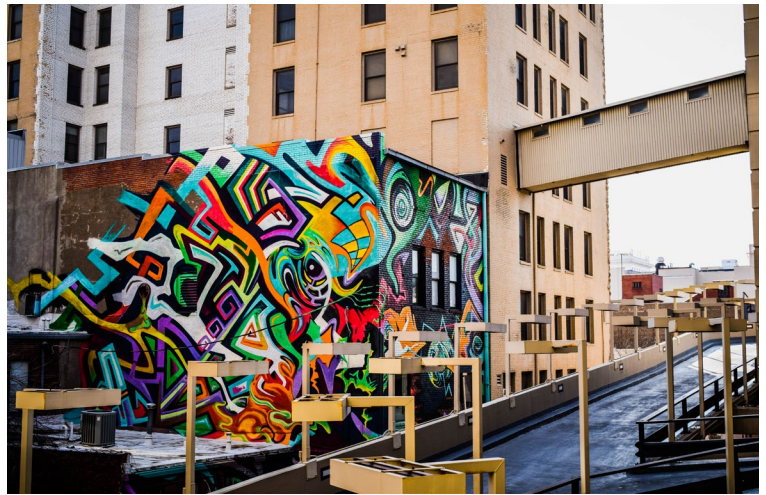
Education: Lincoln offers outstanding educational opportunities and has one of the premier [school districts](#) in the Midwest. In addition, Lincoln is home to various universities and colleges, including the flagship campus of the [University of Nebraska-Lincoln](#), whose Huskers are a proud member of the Big Ten Conference.

Recreation: With 133 parks and 134 miles of trails, five golf courses, a nature center, nine public pools and much, much more, the [Lincoln Parks and Recreation](#) has something for everyone.

Commerce: Lincoln is on the forefront of technology growth and expansion, benefiting from home grown tech start-ups, including Hudl. Lincoln has been named a [smart gigabit city](#) and has developed competitive fiber available to every home and business. Lincoln is also recognized as a top city for young professionals in the country.

Diversity: Lincoln is home to many diverse racial, religious, and ethnic groups. The city has welcomed refugees from all over the world since the 1970's and refugees from over 40 countries now call Lincoln home.

Culture: Lincoln offers a [vibrant cultural scene](#) that includes local theatre, symphony, museums, and the arts. The [Lincoln Children's Museum](#) is one of the country's most premier children's museums offering hands-on exhibits and imaginative programs that allow children and adults to discover the adventure of learning through play together. The [Lied Center for Performing Arts](#) anchors the cultural entertainment.



THE POSITION IN BRIEF

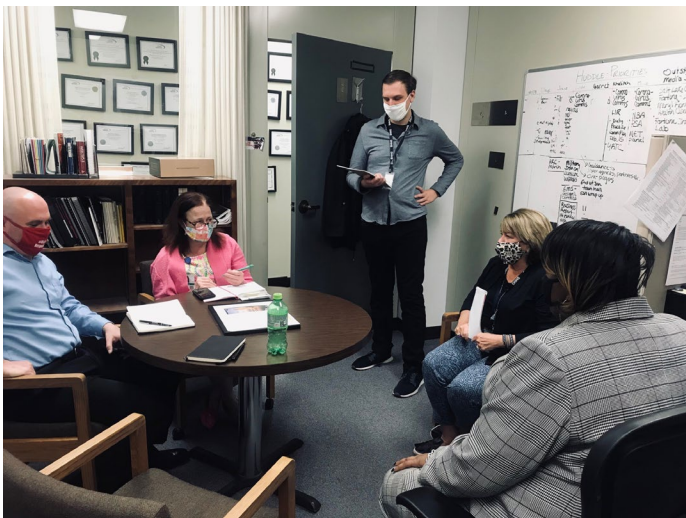
The Regional Hospital Administrator is appointed by the DHHS CEO and reports to the COO for DHHS Facilities. The Regional Centers care for individuals committed by a mental health board or the court system, serving approximately 400 individuals. The Regional Centers include the [Beatrice State Developmental Center](#) and the [Lincoln and Norfolk Regional Centers](#). The Regional Hospital Administrator performs the following duties:

- Directs the operations of the three Residential Regional Centers with a leadership style focused on advising and coaching with respect to operational efficiencies, staffing, policies, procedures, initiatives and objectives that promote excellent patient care.
- Represents and promotes the objectives and services with advocacy organizations such as State Committees, six regional behavioral health administrators, federal agencies and the Joint Commission on Accreditation of Health Care Organizations.
- Partners with the Division of Behavioral Health and Developmental Disabilities to implement strategic initiatives.
- Analyzes facility operations to maximize financial performance and to identify areas for improvement and cost effectiveness, while ensuring high quality customer care.
- Prepares facility operating and capital budgets (combined budget for all three facilities is \$109.4 million and includes 950 employees) and monitor facilities' ongoing expenditures.



THE IDEAL CANDIDATE

Candidates must be visionary and strategic, committed to excellence in customer care, collaborative in effecting change and possess a desire for ongoing innovation. Candidates must have excellent communication and interpersonal skills, an inclusive management style and the ability to build strong partnerships and consensus at all levels of the organization.



CANDIDATE QUALIFICATIONS

- A Bachelor's degree with major coursework in business, hospital, health care or public administration, or related field plus progressively responsible management/administrative leadership experience in a large health care facility.
- A Master's degree in Health Care Administration or related field is preferred. Also preferred is experience in a 24-hour facility/hospital administration serving adult and/or youth patients and experience as a Vice President of Operations or COO of a facility.
- Ideally, candidates will have behavioral health organization experience in a residential setting along with direct patient care experience, fiscal/budget and operations experience in a large behavioral health organization and/or hospitals with multiple sites. Experience with metrics and quality improvement is highly desired.



COMPENSATION AND BENEFITS

Starting salary range is \$130,000 - \$150,000 with full salary range reaching \$170,000 DOQ. The position offers [excellent benefits](#) including medical, dental, vision and life insurance plans including disability. The State of Nebraska also has an excellent pension system that allows for vesting after three years and immediate vesting for individuals over the age of 55. The State contributes 156% of the employee's contribution to the pension plan.



HOW TO APPLY

Interested candidates should apply at once online at www.GovHRjobs.com with a resume, cover letter and contact information for 5 professional references to Heidi Voorhees, President, GovHR USA 630 Dundee Rd. Suite 225 Northbrook, IL 60062.

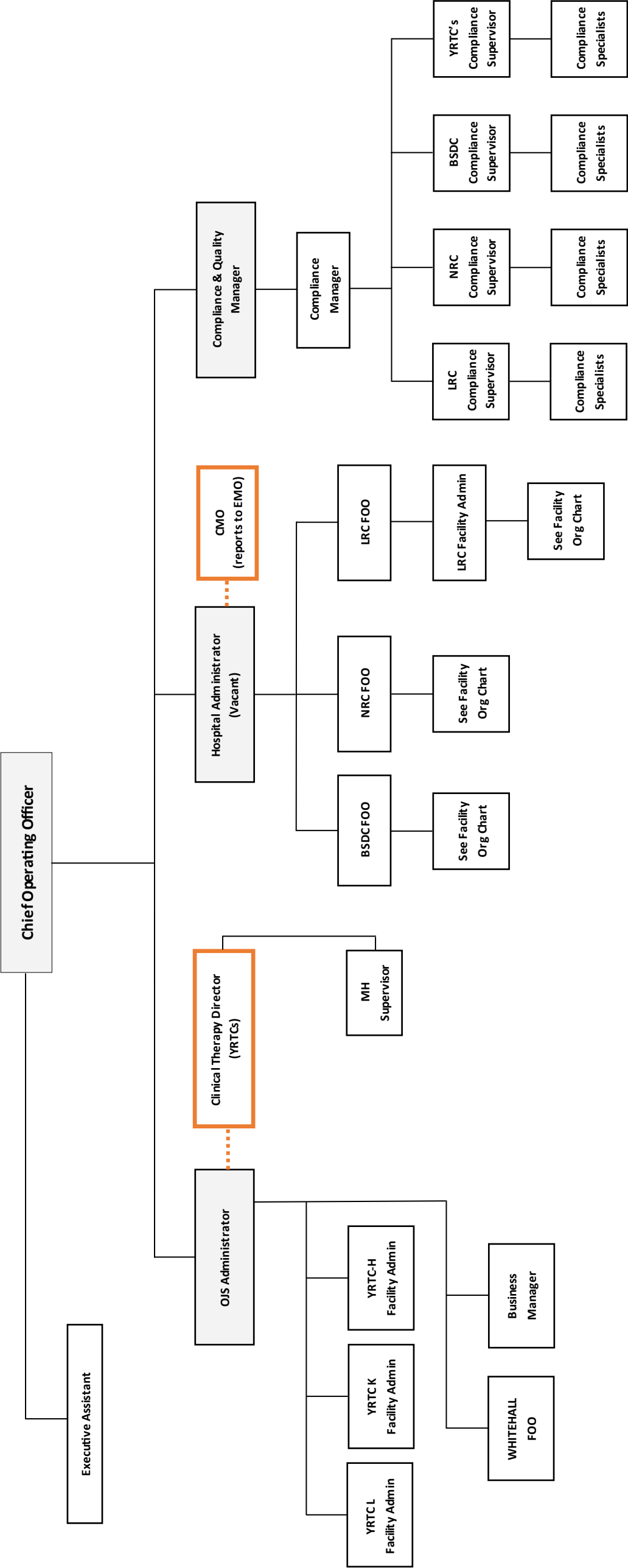
Inquiries regarding this position can be made to:

Heidi Voorhees, President, GovHRUSA
HVoorhees@GovHRUSA.com
630 Dundee Road, #225, Northbrook, IL 60062.
Tel: 847-902-4110

The DHHS values their employees as well as a supportive environment that strives to promote Diversity, Inclusion and Belonging. The DHHS recruits, hires, trains and promotes in all job qualifications and at all levels without regard to race, color, religion, sex, age, national origin, disability, marital status, sexual orientation, or genetics.



EXECUTIVE RECRUITMENT



Orange box = dual/dyad reporting

Orange dotted line + close working relationship/dyad

Residential